

Achievement

I am pleased to present to you the Annual Report compiled by the Auburn-Washburn School District. This report contains information about our school district in the form of charts, graphs, and reports that show you how we are progressing and how well we have accomplished our goals for the year. I hope the data we have collected will be useful to you.

Once again, the 2006-2007 school year has been marked by a number of very positive accomplishments. Our students continue to perform at a very high level when compared to their peers in other districts on state assessments, norm referenced tests, and college entrance exams. This year our schools earned 36, out of a possible 46, Standards of Excellence in Reading and Math on the state assessment and our ACT scores and SAT scores were above state averages. We implemented several new programs and interventions this year to assist our most at-risk students at all levels and we are improving technology through the district as we up-grade our infrastructure to accommodate a wireless environment. This is an exciting time in our district. Our enrollment numbers continue to grow and we have engaged a community group to help us determine the best solutions to accommodate that growth. We value and encourage patron input and appreciate the support of our school community as we stay focused on providing the best possible learning environment for all of our students.



Brenda S. Dietrich

Dr. Brenda S. Dietrich,
Superintendent of Schools

SHINING STARS

Three Auburn-Washburn teachers earned their National Board Certification, Kris Wanamaker - Pauline South, Robin Dixon - Jay Shideler, and Jane Waterson - Auburn Elementary.

Robin Dixon was named a Kansas Master Teacher.

Washburn Rural High School Volleyball and Boys Tennis teams won State Championships.

Dr. Brenda Dietrich was named Kansas Superintendent of the Year and one of four National Superintendent of the Year Finalists.

Washburn Rural High School Math teacher Jolene Ricard received the Kansas Presidential Award for Excellence in Mathematics and Science Teaching.

Vision Forward

This year a group of about 25 patrons came together over the course of seven months to evaluate the facility needs of the district. A number of options were explored and feedback was solicited from the community. This Vision Forward Committee shared the results of their work with the Board of Education who will work to implement the solutions brought forward by the committee.

STRATEGIC PLAN UPDATE

The district's Strategic Plan focuses on seven key areas. Those areas and the goals targeted for 2006-2007 are listed on this page. The status of each goal is indicated by the following symbols:



Completed



In Process

Educational Services

- ✖ Align language arts curriculum across and within grade levels, and develop curriculum guide
- ✓ Complete the selection and implementation of mathematics materials
- ✓ Begin alignment of science curriculum and the development of curriculum guides
- ✓ Review and enhance the at-risk and English Language Learner programs
- ✓ Complete and present an International Baccalaureate proposal
- ✓ Continue the development and implementation of the district's student assessment program
- ✓ Continue implementing recommendations from the curriculum audit
- ✖ Modify the Student Improvement Team process and develop strategies to address areas of need
- ✓ Pilot a developmental reading program for secondary students reading below grade level
- ✓ Identify effective delivery models for teaching elementary gifted students.
- ✖ Align and create support materials for the general education reading and math curriculum for students performing below grade level
- ✓ Evaluate educational benefits of expanded Early Childhood programs
- ✓ Complete required activities in special education as outlined by Kansas Department of Education to ensure compliance with statute
- ✓ Align Vocational Education courses with state requirements as needed to secure funding
- ✖ Maximize alternative funding sources (public, private)

Leadership

- ✓ Coordinate the development of all district, building, and individual plans with the Strategic Plan
- ✓ Promote and provide opportunities for increased patron interaction with all district schools
- ✓ Evaluate requiring summer school to improve student achievement in our schools
- ✓ Create an environment that has a common purpose, is open to change, and characterized by high standards for staff and students
- ✓ Implement Professional Learning Communities to enhance student achievement
- ✓ Focus all aspects of district operations on teaching and learning
- ✓ Provide professional development to expand skills of administrative team

Information & Analysis

- ✓ Implement a data driven decision making process to determine interventions needed to improve student achievement
- ✓ Review the current district system for measuring and reporting student achievement
- Collect and use data from graduates to assess the effectiveness of educational programs and courses offered

Business Services

- ✖ Align textbook fees with textbook adoptions
- ✓ Improve efficiency and accountability of Business Office functions
- ✖ Report funding requirements to implement Curriculum Audit recommendations
- ✖ Develop a multi-year budgeting process
- ✖ Review competitiveness of employee benefits
- ✓ Select and implement new accounting software
- ✓ Research and recommend new student management software with appropriate timeline for implementation

Organizational Support Services

- ✓ Analyze district facility needs and make a recommendation to the Board of Education concerning construction
- ✓ Recommend and establish guidelines for district Wellness Program
- ✖ Develop Heating, Ventilating and Air Conditioning equipment replacement plan
- ✖ Work with local agencies in Shawnee County and statewide to develop emergency preparedness plans
- ✓ Implement wireless technology pilot project
- ✓ Work with Education Division to develop next phase of district's technology plan (hardware, software, staff development, curriculum)

Human Resources

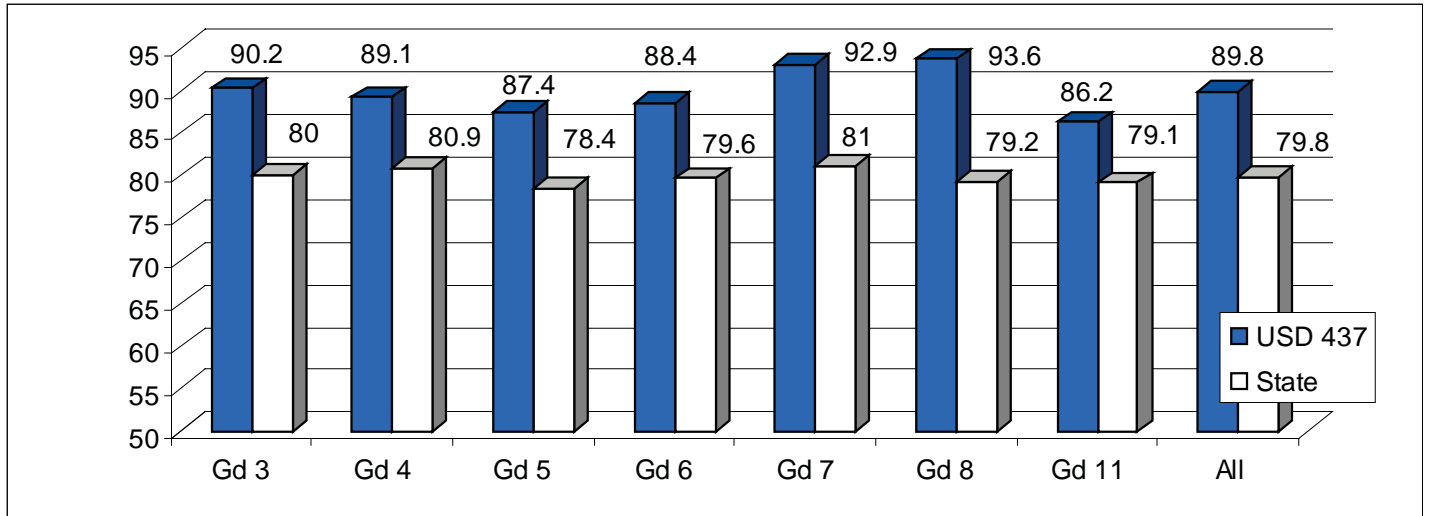
- ✓ Complete the internal evaluation of the duties, functions, and responsibilities of human resources
- ✓ Review recruiting strategies to determine impact on attracting highly qualified staff
- ✓ Prepare procedures manuals for certified human resources office
- ✓ Develop principals' academy that promotes instructional leadership
- ✓ Implement a staff development program called Skill Sets for certified staff (technology, differentiated instruction)

Community & Information Services

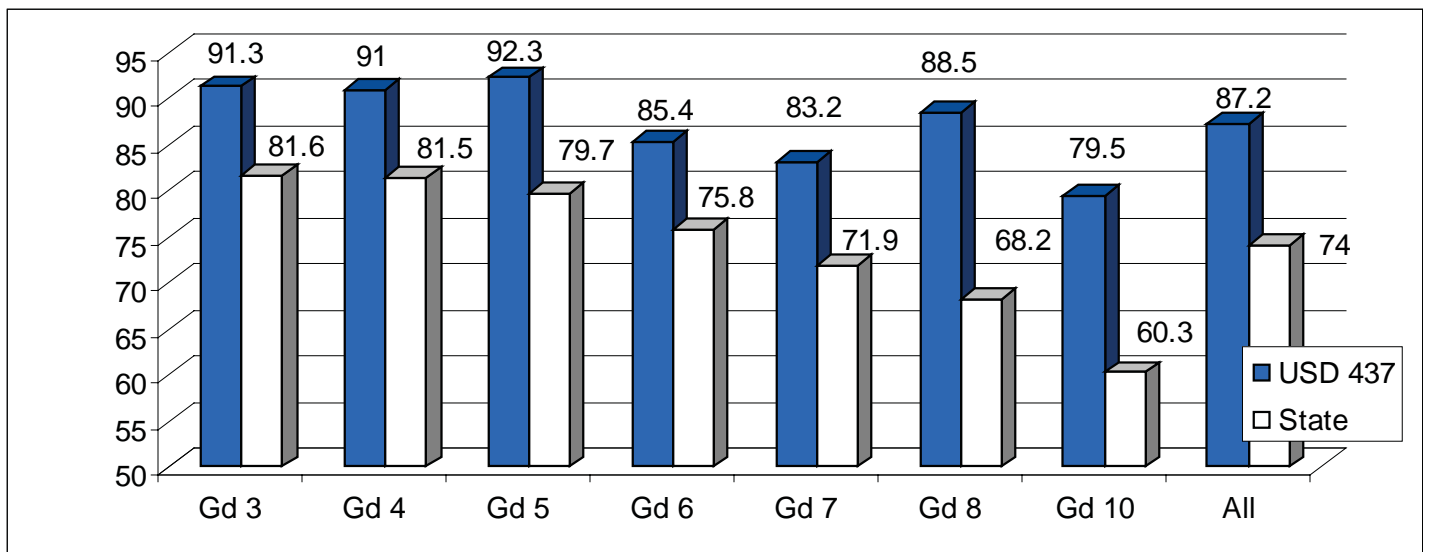
- ✓ Implement marketing plan to foster community support and district growth
- ✓ Conduct employee satisfaction survey to determine improvement opportunities
- ✓ Explore needs and options for automated emergency calling system
- ✖ Enhance informational materials that explain early childhood programs
- ✖ Explore potential for broadcasting information on local educational channel
- ✓ Engage community to assess needs for facility expansion

Test results show high student achievement

Reading Assessments

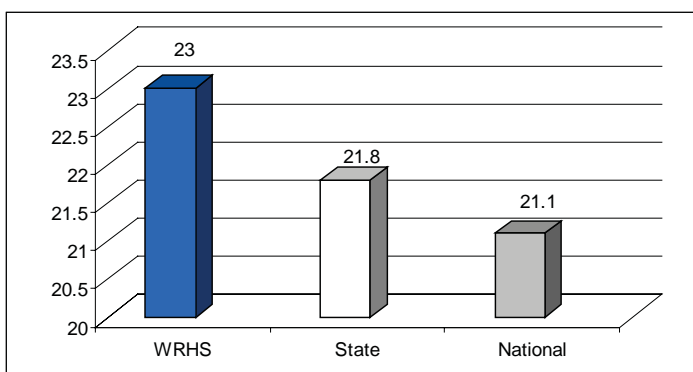


Math Assessments

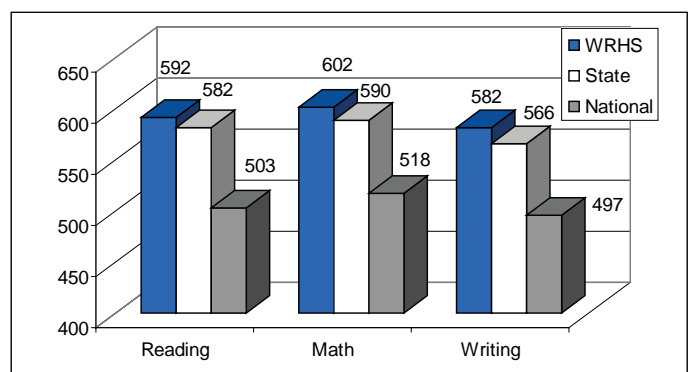


State Assessment data is from 2005-2006 and shows percentages of students scoring proficient or better.

ACT Scores



SAT Scores



ACT & SAT scores are predictors of a student's ability to succeed in college and a measure of general knowledge. Washburn Rural High School students routinely exceed state and national scores on these widely administered tests.

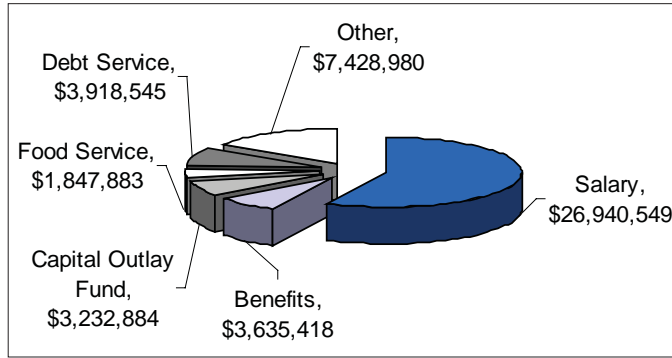


Board of Education Members: (L to R) Joyce Martin *President*, William Sneed *Vice President*, Steve Cavanaugh, Christine Garrett, Darren Haddock, Dr. James Owen, Shawn Tipping

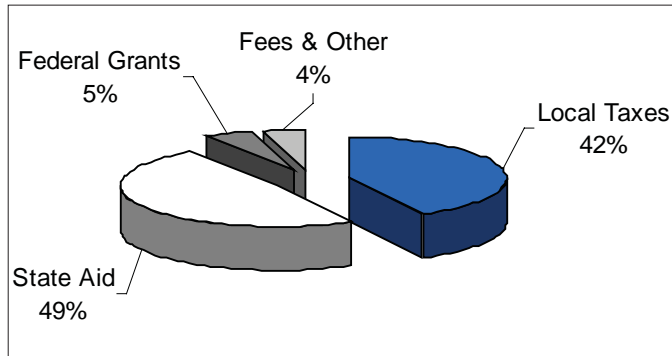
Budget Expenditures by Function

Instruction	\$25,491,784
Student & Instructional Support	\$3,472,311
General Administration	\$1,123,866
School Administration	\$2,206,005
Operations & Maintenance	\$3,795,662
Capital Improvements	\$1,825,434
Debt Service	\$3,918,545
Other Costs	\$5,170,652

Budget Expenditures by Category



Budget Funding Sources

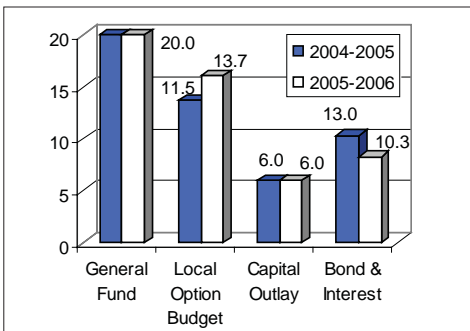


Enrollment & Staffing

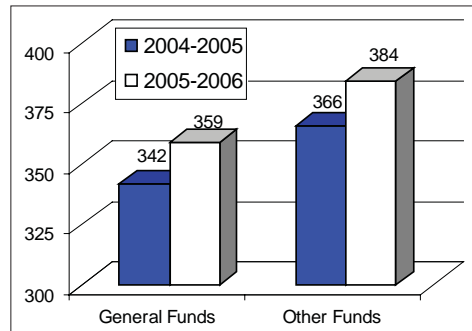
Total Students:	5,411
Certified Staff:	459
<i>Teachers & Student Support</i>	
Certified Staff:	23
<i>Instructional Support & Administrative</i>	
Classified Staff:	295
<i>Classroom Support, Food Service, Transportation, Facilities Maintenance, etc. Total represents full-time equivalent.</i>	

Washburn Rural High School	Total Students:	1,557
Washburn Rural Alternative HS	Total Students:	63
Tallgrass Student Learning Center	Total Students:	28
Washburn Rural Middle School	Total Students:	848
Auburn Elementary	Total Students:	398
Indian Hills Elementary	Total Students:	572
Jay Shideler Elementary	Total Students:	635
Pauline Central Primary	Total Students:	473
Pauline South Intermediate	Total Students:	270
Wanamaker Elementary	Total Students:	547
New Directions	Total Students:	20
<i>(Program for adults seeking HS diploma)</i>		

Mill Levy Rates by Fund

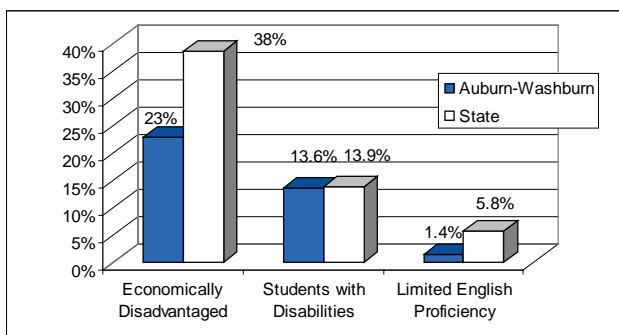


Assessed Valuation in millions



Financial data is from audited 2005-2006 budget.

Student Demographics



Student Ethnicity

